



# **GEOTRACER**

TO PROTECT & TO MANAGE



**TRACK & TRACE, FLEET MANAGEMENT & ANTI-THEFT SYSTEM**

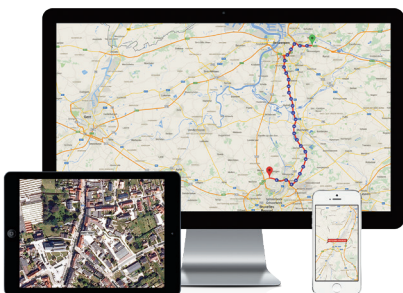


## **REGISTRATION WITH CHECKIN@WORK**

Workers at big construction sites are required to register with checkin@work prior to the commencement of the job. GeoTracer's solution allows a quick & easy registration procedure.

### **QUICK & EASY**

Before you commence work at a large site, you need to check whether you are required to register. This registration requirement applies to all people engaged in construction work, as well as to all construction supervisory staff and the safety coordinator. This often entails a lot of administrative work, an aspect that is easily forgotten. GeoTracer offers you the perfect solution !



### **YOUR BENEFITS**

✓ **Regulatory compliance**



GeoTracer's solution means you no longer need to worry about social inspections and costly penalties: all employees can easily check in at the site prior to the commencement of the work.

✓ **Quick and easy check-in**

Checking in is very easy using a badge system in the vehicle, but is also possible via our app or web application! Our technology detects at which site the vehicle is located, thereby greatly facilitating the check-in procedure.

✓ **Detailed report**

Our web application gives you instant access to a clear report containing the recorded data for swift follow-up.

**CONTACT US FOR FURTHER INFORMATION AND/OR AN OBLIGATION-FREE DEMO**

GeoTracer - Gaverlandstraat 73 - 9031 Drogenen - T +32 9 335 61 35 - F +32 9 270 32 69 - info@geotracer.be

WE MANAGE & PROTECT YOUR FLEET - TRAILER - GOODS

**WWW.GEOTRACER.BE**